

Terwillegar Community Garden Vision for 2018

Terwillegar Community Gardens is a not for profit organization under the Terwillegar Community League that is run solely by volunteers. Garden members grow organic vegetables for their use and for the food bank. We have been doing this since 2009.

The garden was developed with 60 10'X10' garden plots with wood chip mulch pathways. Since then weeds have taken over the pathways and several plots. An effort is needed by Membership to maintain pathways and reduce weeds. Our garden relocation project has been stalled so we will be in our current location for the foreseeable future.

Our vision for 2018 is to:

- Fill all available garden plots where only 2 plots maximum per person
- Reduce the pocket gopher and mice population in the garden area
- Membership maintain pathways to reduce weeds and keep area by garden shed clean
- Apply for and obtain grant funding for garden relocation



Terwillegar Community Garden Network

Annual Registration Meeting
April 6 & 7, 2018



Agenda

- About the community garden
- 2018 Garden Leaders
- 2018 Garden Operations Budget
- Garden Designs
- Lessons learned
- Membership take away(s)
- Volunteering
- Plot assignment update



About the Community Garden

- Nineth year of operation in this location
- Garden is funded by the TCL. It is an activity sanctioned by the Community league hence plot renters must belong to a community league. This provides us with insurance coverage.
- The City owns the land. Community league to determine what the area is to be used for prior to the Community Garden getting grants to upgrade and/or relocate the garden



2018 TCGN Garden Leaders

Positions (non-elected 2018)

- *Garden Coordinator* – Amanda Hunt & Steve Johnson
- *Resource Coordinator, Community Relations Coordinator, Site Coordinator* – Shared by Steve Johnson, Amanda Hunt, Grace Subchuk, Fengtao Li
- Time commitment is between 4 and 8 hours per month during the garden season. Garden leaders get a plot at no charge



Current Garden Operations Budget 2018

- Revenue

- Memberships – Estimate of \$1800 based on plot rentals

- Expenses

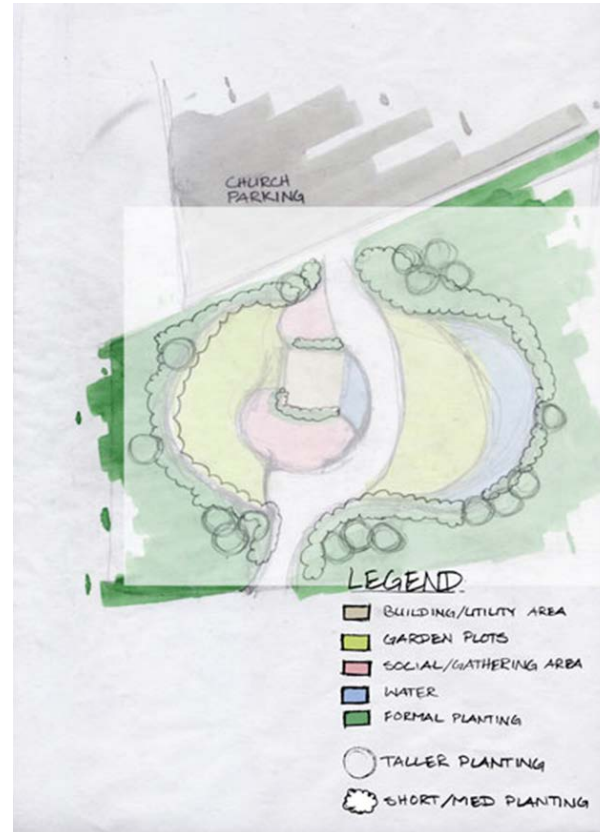
- Water - \$300 - \$500
- Rotor tiller rental - \$250

- Garden renovation

- Estimate expenses of \$20,000 - \$30,000



Garden Designs



Options to be developed for entire area based on garden and community needs. Watch for community development survey.



Lessons Learned

1) Watering

- Mulching with weed seed and pesticide free grass clippings of 2-5cm depth recommended to retain moisture. To reduce weeds, lay down weedblock fabric and then cover with mulch.
- Grade the plot so water does not run off readily. This can be done by leaving shallow trenches, making the center of the plot the low spot, or building up the edge of the plot with a soil berm to minimize run-off



Lessons Learned

2) Pathways

- Many weeds and grasses are taking over the pathways between plots. Workbees to maintain pathways did not get adequate turn out
- Recommend that membership place weed block fabric around their plots and cover with mulch (woodchip, grass clippings)
- If you have other ideas please contact us **FIRST** before implementing



Lessons Learned

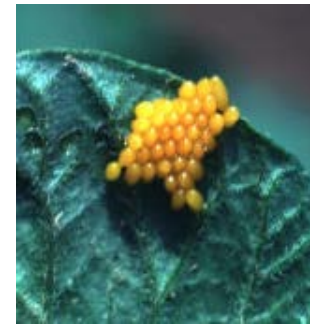
3) Vertical Gardening

- The use of vertical growing techniques is welcome. *These plots will be localized to the north end of the garden so all garden plots have sun access*
- For those that do vertical gardening (peas, beans, tall corn) place larger plants to north side of your plot.* If you want to plant lots of tall plants let volunteer members know during plot assignments so you get a middle or north plot.



Lessons Learned

4) Potato beetle



- They are STILL here after 3 years without potato crops
- <http://www.attra.org/attra-pub/coloradopotato.html>
- Remove eggs
- Shake potato tops into a large pail for fast removal
- If a gardener can not visit the plot twice a week for beetle control, do not plant potatoes as they will destroy your crop.
- Recommend not planting potato's, as without food the beetles will die out



Lessons Learned

5) Powdery Mildew

- Plant in full sun and have good air circulation (prevent overcrowding plants)
- Pick off infected leaves and dispose in garbage;
- Organic Sprays - Neem oil, chamomile tea, 1 teaspoon baking soda to 1 litre water, 1 part cow milk to 9 parts water. Spray after rainfall and through-out garden season
- Use a thick mulch (grass clippings not sprayed with pesticides, leaves) to keep spores from getting on the plants from the soil



Lessons Learned

6) Rabbits, mice, and pocket gophers

- Rabbits ate plants through-out the garden; they preferred beets and cabbage and some forms of squash
- Control by chicken wire staked with bamboo poles or long poles to at least 4 ft high
- Gophers and pocket gophers invaded several plots. Some success with fencing to keep gophers out. Best to use the pocket gopher traps provided. Can also use gopher bombs available at Apache Seeds and UFA.
- Mice are living in the plants/weeds piled up by the garden shed. Set up mouse traps in your plots to reduce mice numbers



Lessons Learned

7) Canada Thistle

- A very successful weed. Must be dug out by the root. If any root is left it will regenerate. Don't let it get to seed. Cut it down or pull it out routinely.



Lessons Learned

8) Produce theft

- Several gardeners reported losing produce during 2016. Tricks to reduce theft include:
 - High fence around your plot
 - Plant crops that are not easily taken
 - Pick crops that are not standard (for example, green tomato's)



Lessons Learned

9) Garbage near garden shed

- This is a costly expense for the garden when we have to remove it. Please help keep operational costs down by removing all your individual & plot garbage. This includes plant tops, weeds, seed packages, trays etc.
- Garbage piles invite rodents to move into our garden area. These unwanted guests can have an impact on your individual crops.
- Non weed plant tops can be buried in the plot at the end of the season.



Membership – Take Aways

- Rotor tiller will be provided for use by plot renters (weekend TBD)
- No compost system has been put in place, please remove all your compost & garbage from the garden area – ***DO NOT PILE GARBAGE NEAR THE SHED.***
- Keep WEEDS and insects under control in and around your plot
- Survey completion for Edmonton Community Garden Network to be completed by all members when sent out by e-mail at the end of the garden season
- Mandatory community league membership as this is a community league sanctioned service and then we are covered by community league insurance
- Plots are 3.3 meters by 3.3 meters. The wood mulch paths have been soiled in. If in doubt, contact a Garden Leader to confirm your plot.
- Put up a chicken wire mesh to keep out rabbits and gophers.
- Remove ALL borders at the end of 2018 garden season.



Volunteer Opportunities

- Weeding & keeping site free from trash
- Filling water tanks (frequency based on weather & consumption requirements – approx 2-3 hours per fill)
- Fundraising
- Assistance with grant applications



Plot Assignments

- Garden leaders will provide plot assignments once registrations are complete. The map will be provided by an e-mail and it will also be posted in the garden shed by May 2018.
- *Those that do vertical gardening will be assigned northern plots.*
- **We will try to keep plot assignments the same for returning gardeners; however, situations may arise that require us to move your plot assignment.**



